



BLAIRGOWRIE & RATTRAY DEVELOPMENT TRUST COMMUNITY PROGRAMME

SUPPORTING LOCAL GROUPS & PROJECTS

INTRODUCTION

The Trust is a community-led organisation working to make improvements to the town, and supporting others to make our community a better place in which to live, work and visit. So, if you have an idea or are working on a project, the Trust may be able to help.

WE OFFER...

- Business and support services for community groups and individuals, who through their activities and projects are making improvements to the town for the people who live, work and visit
- Opportunities to widen partnership working and collaboration on the implementation of the Blairgowrie & Rattray [Community Action Plan](#), and other similar projects which enhance the town
- Support to build capacity, resilience and sustainability within a widening network of individuals, community groups and organisations working together for the benefit of the town

MEMBERSHIP

Individuals and groups are eligible where they:

- Operate in the same geographical area as the Trust
- Support the aims of the Trust; working in similar ways to achieve benefits for the town
- Satisfy the conditions of affiliate membership and/or volunteer status

COMMUNITY PROGRAMME MEMBERSHIP PACKAGES

TYPE	DURATION	FEES	INFORMATION
INITIAL CONSULTATION	Up to 3 consultation and advice sessions	Free	Some funds may be available from BRDT Small Grants Scheme
BASIC	Fixed term - can be reviewed and extended	Pre-funding award, it may be possible to offer in-kind services and/or small set-up grants. Thereafter a pre-agreed management fee will be chargeable.	
ENHANCED	Larger scale and longer term - usually minimum one year through to long term	Pre-funding award, it may be possible to offer in-kind services and/or small set-up grants. Thereafter a pre-agreed management fee will be chargeable	Suitable for medium to longer term operational services where BRDT may directly employ staff. Applications for funding will include a management fee of between 10% and 15% depending on service level provided by Trust An Exit plan is agreed at sign up

CHARGES, FUNDING AND INCOME

As a relatively new organisation, the Trust currently receives funding from the Scottish Government - Supporting Communities Programme. This is short term to strengthen the organisation until such times as it can achieve financial sustainability through generating income.

Accordingly, fees charged to projects are re-invested in the Trust to meet staff costs, enhance reserves and to ensure sustainable future investment in community projects.

Applications for funding by individuals and non-constituted community groups submitted in the name of the Trust, will require the Programme Member to apply for Affiliate Status. In some instances, and at the discretion of the Trust, this may require submission of a satisfactory PVG check.

The Trust will continue to seek grant funding for core staff to provide professional development and financial services which are free to new projects and/or those at risk.

Where the Trust supports a project, which needs to apply for funding, it may be possible (with Board approval) to access small sums from Trust funds to enable work to begin pending a decision.

Where relevant for particular projects or activities, the option of an hourly rate of approximately £50 per hour is offered for a range of business supports and financial services.

The Trust will also generate income from its annual fundraising schemes, the One Voice - Booklore shop, Hub magazine advertisements and hire of conference facilities to external groups and organisations.

The charge for conference/meeting room facilities at BRDT Project Office, 1-3 Meadow Place, Blairgowrie is £15 per hour, £50 for ½ day or £75 for a full day at 2019 rates.

SERVICES AND SUPPORTS

Initial Consultation

- Informal advice/guidance, signposting

Basic Membership

- Financial management
- Fundraising management
- Funding applications
- Project and Programme management
- Branding and use of BRDT logo
- Access to conference facilities and meeting rooms
- Office services – small scale printing

Enhanced Membership

All of the above plus...

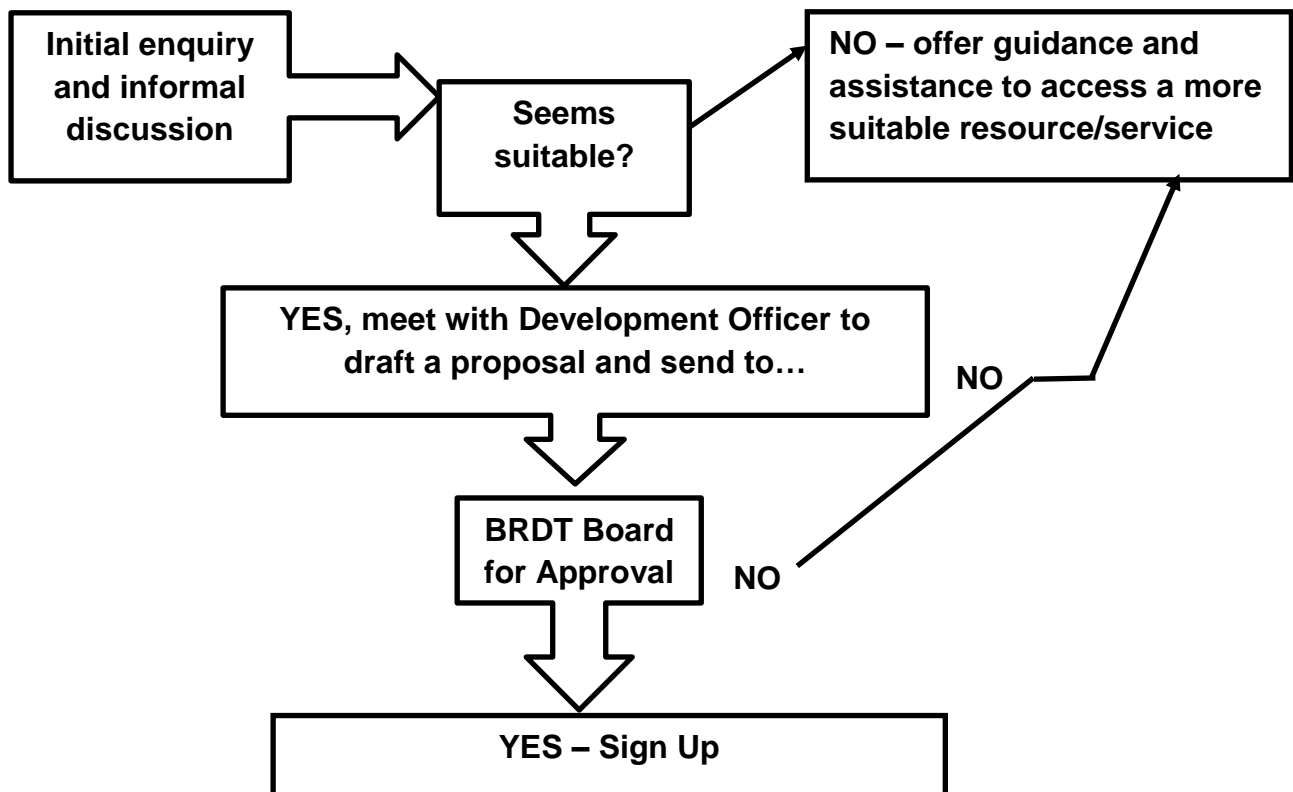
- Staff recruitment and employment
- Volunteer recruitment and support – free (excepting advertisement costs in commercial publications)
- Office accommodation, administration and business support

COMMUNITY AND MEMBER-LED

Basic and Enhanced Programme Members will be asked to participate in annual evaluation and improvement planning for this service

- Members will be encouraged to share views and experiences, suggestions for improvement and to participate in plans for further development of the Community Programme
- An annual self-evaluation of the Programme through consultation with all members – online survey
- An annual report will be co-produced and widely published - online and in appropriate print media

JOINING THE COMMUNITY PROGRAMME



ENDING MEMBERSHIP

For Basic and Enhanced membership, arrangements will be pre-agreed and detailed in an 'exit plan'. This allows for the management of issues such as notice of termination of employment, preparation of customers, business continuity etc.

BRDT may consider terminating an agreement where there is clear evidence of a significantly detrimental event. It will be the decision of the Board of Trustees to proceed with either remedial measures or end a membership agreement.

END NOTES: